

CD11b Antibody
Rabbit mAb
Catalog # AP90086**Specification**

CD11b Antibody - Product Information

| | |
|---|------------------------|
| Application | WB, IHC, ICC |
| Primary Accession | P11215 |
| Clonality | Monoclonal |
| Other Names | |
| CR3A; MO1A; CD11B; MAC-1; MAC1A; SLEB6; ITGAM | |

| | |
|---------------|------------|
| Isotype | Rabbit IgG |
| Host | Rabbit |
| Calculated MW | 127179 Da |

CD11b Antibody - Additional Information

| | |
|------------------------------|---|
| Dilution | WB~~1:1000 IHC~~1:100~500 ICC~~N/A |
| Purification | Affinity-chromatography |
| Immunogen | A synthesized peptide derived from human CD11b |
| Description | ITGAM, also named as CD11B and CR3A, belongs to the integrin alpha chain family. It is implicated in various adhesive interactions of monocytes, macrophages and granulocytes as well as in mediating the uptake of complement-coated particles. ITGAM is identical with CR-3, the receptor for the iC3b fragment of the third complement component. It probably recognizes the R-G-D peptide in C3b. |
| Storage Condition and Buffer | Rabbit IgG in phosphate buffered saline , pH 7.4, 150mM NaCl, 0.02% sodium azide and 50% glycerol. Store at +4°C short term. Store at -20°C long term. Avoid freeze / thaw cycle. |

CD11b Antibody - Protein Information**Name** ITGAM ([HGNC:6149](#))**Synonyms** CD11B, CR3A**Function**

Integrin ITGAM/ITGB2 is implicated in various adhesive interactions of monocytes, macrophages and granulocytes as well as in mediating the uptake of complement-coated particles and

pathogens (PubMed:20008295, PubMed:9558116). It is identical with CR-3, the receptor for the iC3b fragment of the third complement component. It probably recognizes the R-G-D peptide in C3b. Integrin ITGAM/ITGB2 is also a receptor for fibrinogen and factor X. It recognizes P1 and P2 peptides of fibrinogen gamma chain. Regulates neutrophil migration (PubMed:28807980). In association with beta subunit ITGB2/CD18, required for CD177-PRTN3-mediated activation of TNF primed neutrophils (PubMed:21193407). Integrin ITGAM/ITGB2 is also a receptor for ICAM1 ligand ensuring adhesion between stimulated neutrophils and stimulated endothelial cells (PubMed:1980124). May regulate phagocytosis-induced apoptosis in extravasated neutrophils (By similarity). May play a role in mast cell development (By similarity). Required with TYROBP/DAP12 in microglia to control production of microglial superoxide ions which promote the neuronal apoptosis that occurs during brain development (By similarity).

Cellular Location

Cell membrane; Single-pass type I membrane protein. Membrane raft; Single-pass type I membrane protein

Tissue Location

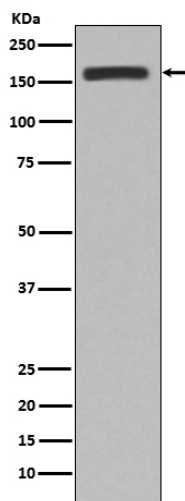
Predominantly expressed in monocytes and granulocytes (PubMed:1346576). Expressed in neutrophils (at protein level) (PubMed:21193407).

CD11b Antibody - Protocols

Provided below are standard protocols that you may find useful for product applications.

- [Western Blot](#)
- [Blocking Peptides](#)
- [Dot Blot](#)
- [Immunohistochemistry](#)
- [Immunofluorescence](#)
- [Immunoprecipitation](#)
- [Flow Cytometry](#)
- [Cell Culture](#)

CD11b Antibody - Images



Western blot analysis of CD11b expression in RAW264.7 cell lysate.